



Model 240

Diagnostic Audiometer

- Easy to use
- Compact and fully portable
- Lightweight – only 715 grams
- Threshold retention function
- Optional insert headphones
- 11 test frequencies
- -10 to 120 dBHL range (AC)
- Optional battery powered feature
- Integral talk over function
- Optional NOAH interface

The **Amplivox 240** is an inexpensive diagnostic audiometer, which is ideal for both desktop and mobile use.

Functionality

The **Amplivox 240** offers air and bone conduction audiometry. Standard features include silent operation selectors, narrow band masking, an attenuator range up to 120 dBHL and easily read displays.

Ease of Use

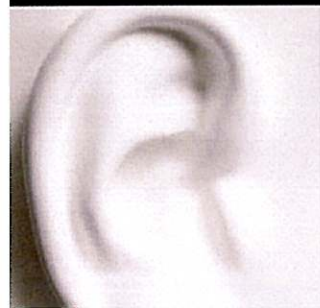
The clearly laid out control panel makes diagnostic testing as simple and

straightforward as possible. The threshold retention function reduces test time and gives a higher level of test subject concentration. Results can be saved in memory, printed with the optional printer and/or transferred to a PC with the optional NOAH interface.

Fully Portable

Designed to satisfy all domiciliary testing requirements, the **Amplivox 240** can be supplied with an optional battery power function in addition to the standard mains power adaptor. Its compact size, lightness and power options make this a totally portable diagnostic audiometer.





Standard equipment

- Audiometric headset
- Bone conductor headset
- Patient response switch
- Audiogram cards (50)
- Operation manual
- Mains adaptor
- Integrated talk over function
- Custom-designed carrying case

Optional equipment

- Masking earpiece and lead
- Audiocups (noise reducing headset enclosures)
- NOAH interface*
- Internal battery power option
- Insert earphones
- External printer*



Carrying case

For domiciliary use, the **Amplivox 240** is supplied with a carrying case, designed to accommodate the audiometer and all accessories.

* For AC and BC test results.

Technical Specification

OUTPUT/INPUT DATA

Outputs: Left AC, Right AC, Bone (L&R) insert masking
 Frequency range (Hz): AC: 125-8kHz BC: 250Hz-8kHz
 Frequency accuracy: <1%
 Output level range (AC): -10dBHL to 120dBHL (max)
 Output level range (BC): -10dBHL to 70dBHL (max)
 Insert masking output: 90dBHL max (250-4kHz)
 Output level accuracy: Within 3dB
 Output level step size: 5dB
 Output transducer Options: TDH39/TDH49 earphones and/or optional insert earphones
 Tone present: Single, pulsed, warble or continuous
 Masking: Narrowband
 Communication: Integral talk forward facility
 NOAH interface: Transfer of AC and BC test results

PHYSICAL DATA

Display: 2 lines of 24 characters
 Power (battery): 4 x 1.5V "C" type batteries
 Power (mains): 240V ac 50/60 Hz
 Dimensions (mm): 260 x 177 x 68
 Weight: 715 grams

STANDARDS

The Amplivox 240 conforms to the relevant clauses of the following standards.
 Safety: EN60601-1
 EMC: EN60601-1-2
 Audiometric: EN60645
 CE mark: Approved for Medical Device Directive

The Amplivox policy is one of continuous development and consequently the equipment may vary in detail from the description and specification in this publication.

Model 240
Audiometer



Amplivox Ltd
 Ed Snyder - National Sales Manager

7625 Golden Triangle Drive, Eden Prairie, MN 55344 USA
 Toll Free 1-888-941-4208
 Fax 952-903-4200
 E-mail: ejs@amplivox.us
 www.amplivox.us